



TECHNICAL PARTNER:



# WARMME

Wellness "on demand" at 360°

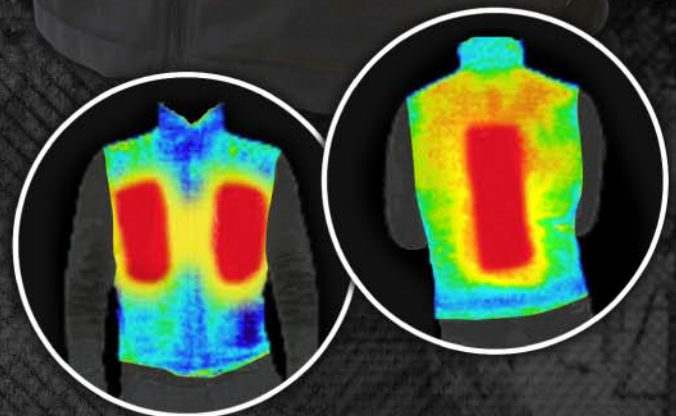
During cold periods, often we are dressed improperly respect to temperature and activity performed.

With WARMME today you can feel better, you can decide the best temperature depending on the activity or the environment in which you are, whatever type it is.

Produced with soft material durable and elastic, has a double outer layer water-proof/wind-block. Studied to be worn under any jacket or coat, adapting it to the different moments of the week. WARMME is the garment for all days: for outdoor job, sports and hobbies.

Details are the difference:

- One invisible circuit with flexible and ultra-flat hotplates
- One single "Easy touch" button (to be used without taking off gloves) to select one of the 3 temperatures available
- Lithium-ion battery smaller, lighter and rechargeable quickly
- Double side zip for a perfect fit to the body always
- Zip pullers and "easy open" flaps on double inside pockets
- Zip "reverse" to the external side pockets to prevent accidental opening.



**WPA415**  
Rechargeable lithium-ion battery (spare)

**WPA420**  
12V plug car battery charger



**WPA425**  
110V battery charger